



Kyprolis®  
(carfilzomib) for injection

Let's make a

**re** remission  
PLAN

for multiple myeloma relapse

Remember, [re]remission is possible.\*  
See the steps inside.

\*Achieving [re]remission happens when you get back to remission, when your disease doesn't get worse and you have a complete or partial disappearance of signs or symptoms, after relapse.

In clinical studies of patients with relapsed or refractory multiple myeloma, four KYPROLIS® combinations kept the disease from getting worse and helped patients reach at least a complete response better than comparators:

KYPROLIS® given twice a week with Darzalex® (daratumumab) and dexamethasone kept the disease from getting worse longer than KYPROLIS® and dexamethasone alone. With an average follow-up of ~17 months, the median progression-free survival (the length of time from the start of treatment until half of the patients have experienced worsening disease or death) for patients who received KYPROLIS®, Darzalex®, and dexamethasone has not yet been reached vs a median progression-free survival of 15.8 months for KYPROLIS® and dexamethasone alone. More patients reached a complete response when they received KYPROLIS® given with Darzalex® and dexamethasone vs KYPROLIS® and dexamethasone alone (28% vs 10%).

KYPROLIS® given twice a week with dexamethasone kept the disease from getting worse longer than Velcade® (bortezomib) and dexamethasone (median of 18.7 months compared with 9.4 months). More patients reached a complete response or better when they received KYPROLIS® and dexamethasone vs Velcade® and dexamethasone (13% vs 6%).

KYPROLIS® given once a week with dexamethasone kept the disease from getting worse longer than KYPROLIS® given twice a week with dexamethasone (median of 11.2 months compared with 7.6 months). More patients reached a complete response or better when they received KYPROLIS® once a week at a higher dose and dexamethasone vs KYPROLIS® twice a week at a lower dose and dexamethasone (7.1% vs 1.7%). 27 mg/m<sup>2</sup> is not an FDA-approved dose for KYPROLIS® in combination with dexamethasone.

Please see additional Important Safety Information on pages 28-30.

KYPROLIS® given with Revlimid® (lenalidomide) and dexamethasone kept the disease from getting worse longer than Revlimid® and dexamethasone (median of 26.3 months compared with 17.6 months). More patients reached a complete response or better when they received KYPROLIS® given with Revlimid® and dexamethasone vs Revlimid® and dexamethasone (32% vs 9%).

#### APPROVED USE

- KYPROLIS® (carfilzomib) is a prescription medication used to treat adult patients with relapsed or refractory multiple myeloma who have received one to three previous treatments for multiple myeloma. KYPROLIS is approved for use in combination with daratumumab plus dexamethasone, dexamethasone or with lenalidomide plus dexamethasone, or isatuximab plus dexamethasone, which are other medicines used to treat multiple myeloma.

#### IMPORTANT SAFETY INFORMATION

**KYPROLIS® (carfilzomib) can cause serious side effects:**

- **Heart problems:** KYPROLIS can cause heart problems or worsen pre-existing heart conditions. Death due to cardiac arrest has occurred within one day of KYPROLIS administration. Before starting KYPROLIS, you should have a full medical work-up (including blood pressure and fluid management). You should be closely monitored during treatment.

Let's make a

# re remission PLAN

for multiple myeloma relapse

Step 1 Take a breath



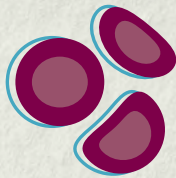
## Relapse happens. So does [re]remission

“ You can get through this; it hasn't been easy, it has been a journey, but I would like to give people hope. ”

-Yolanda (real KYPROLIS® patient)

When multiple myeloma relapses, it is never easy. But it's important to know **you are not alone**. Many others have had relapses and have successfully gone back to remission. This can be thought of as achieving a [re]remission, and there are people and organizations who are dedicated to helping you get there. This **support can come in many forms**: Your healthcare provider giving treatment guidance and family members lending a hand, as well as treatment with KYPROLIS®.

This brochure has information about relapse and KYPROLIS®. It may be useful to you throughout your treatment.



**You are not alone with your diagnosis. Though it is not a common cancer, multiple myeloma is still the second most common blood cancer in the United States**

### IMPORTANT SAFETY INFORMATION

- **Kidney problems:** There have been reports of sudden kidney failure in patients receiving KYPROLIS. Your kidney function should be closely monitored during treatment.
- **Tumor lysis syndrome (TLS):** Cases of TLS have been reported in patients receiving KYPROLIS, including fatalities. You should be closely monitored during treatment for any signs of TLS.

Please see additional Important Safety Information on pages 28-30.

**Kyprolis**<sup>®</sup>  
(carfilzomib) for injection

# What's inside

## About multiple myeloma | Page 5

About multiple myeloma

## How KYPROLIS® (carfilzomib) may help | Page 6

KYPROLIS® is an FDA-approved treatment  
How KYPROLIS® works

## Clinical trial results | Page 9

KYPROLIS® + Darzalex®\* + dexamethasone  
KYPROLIS® + Revlimid® + dexamethasone  
Once-weekly KYPROLIS® + dexamethasone  
Twice-weekly KYPROLIS® + dexamethasone

## What to expect with KYPROLIS® | Page 19

How KYPROLIS® is given

## Tips for a positive infusion experience | Page 20

Preparing for an infusion  
Taking care after an infusion

## Possible side effects | Page 23

Safety information about KYPROLIS®  
When to call your doctor  
Most common side effects

## Finding support | Page 25

KYPROLIS® Patient Support program  
AMGEN Nurse Ambassadors  
Financial assistance for KYPROLIS®  
Enroll in the KYPROLIS® Patient Support program

\*Darzalex® (daratumumab).

## IMPORTANT SAFETY INFORMATION

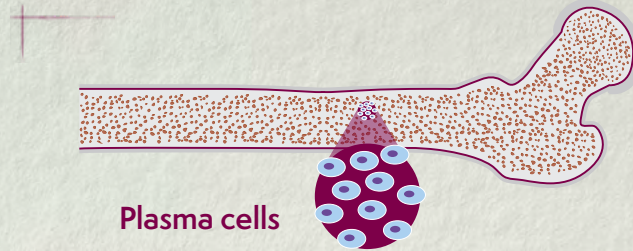
- **Lung damage:** Cases of lung damage have been reported in patients receiving KYPROLIS, including fatal cases.

Please see additional Important Safety Information on pages 28-30.

# About multiple myeloma

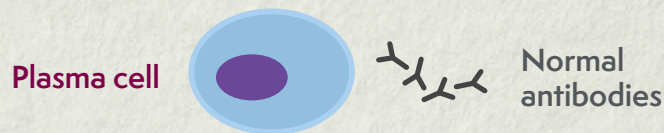
Multiple myeloma is a type of blood cancer of plasma cells. Plasma cells are normally found inside the bone marrow.

## Healthy bone marrow



Plasma cells

Healthy bone marrow makes a type of white blood cell called plasma cells...

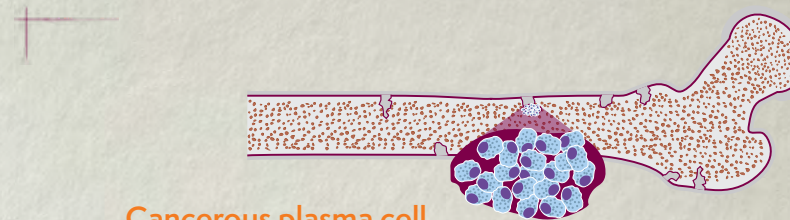


Plasma cell

Normal antibodies

...which make proteins called antibodies to fight infection.

## Multiple myeloma



Cancerous plasma cell

In multiple myeloma, plasma cells become cancerous...



Multiple myeloma cell

M-proteins

...and turn into multiple myeloma cells that produce abnormal antibodies (M-proteins). The amount and level of M-proteins (also called an M-spike) can help your doctor measure the disease and follow your response to treatment.

When there are too many myeloma cells, they produce large amounts of M-proteins and crowd out normal blood cells in the bone marrow. This can cause damage to your bones, kidneys, and other organs, as well as low blood cell counts.

## KYPROLIS® (carfilzomib) is an FDA-approved treatment for people with relapsed or refractory multiple myeloma

For years, doctors have chosen KYPROLIS® to help people get back to remission after relapse. Your doctor can combine KYPROLIS® with both Darzalex® (daratumumab) and dexamethasone, both Revlimid® (lenalidomide) and dexamethasone, or with dexamethasone alone. KYPROLIS® can be given once or twice weekly, depending on your treatment combination—your doctor will decide which is best for you.

Let's make a  
**re** remission  
PLAN  
for multiple myeloma relapse

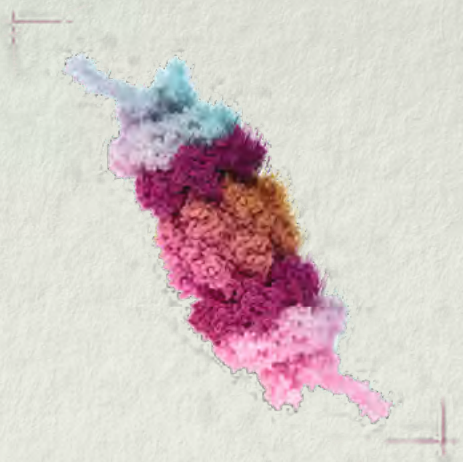
Having a relapse can feel devastating at first, but with treatment, many people are able to move beyond relapse and back to [re]remission

### IMPORTANT SAFETY INFORMATION

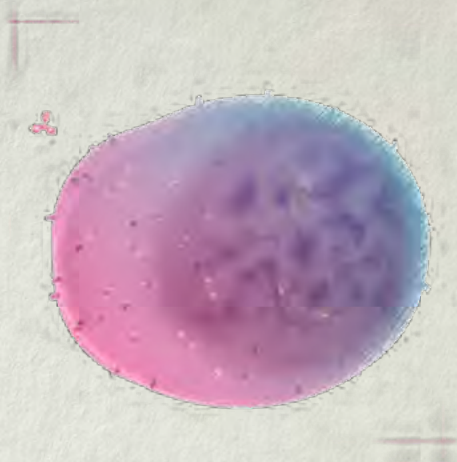
- **Pulmonary hypertension (high blood pressure in the lungs):** There have been reports of pulmonary hypertension in patients receiving KYPROLIS.
- **Lung complications:** Shortness of breath was reported in patients receiving KYPROLIS. Your lung function should be closely monitored during treatment.

## How KYPROLIS® works

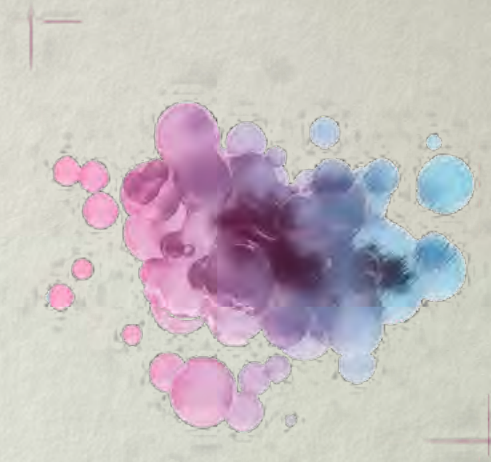
KYPROLIS® is a proteasome inhibitor. Myeloma cells rely on proteasomes to recycle extra proteins in order to continue to grow and multiply.



Proteasome inhibitors block a cell's proteasomes.



This causes many proteins to build up inside the cell...



...which results in the death of the myeloma cell.

Though KYPROLIS® affects myeloma cells more than normal cells in your body, normal cells may also be affected by treatment.

Please see additional Important Safety Information on pages 28-30.

**Kyprolis**<sup>®</sup>  
(carfilzomib) for injection

Let's make a

# re remission PLAN

for multiple myeloma relapse

**Step 2** Understand that  
this is treatable





# KYPROLIS® works hard to get you through relapse and back to focusing on your life, not your disease

“ Seeing that my labs were actually changing by using KYPROLIS® put me in a better way that we were going the right direction. In my case, I went into complete remission with KYPROLIS®. ”

-Yolanda (real KYPROLIS® patient)

In clinical trials, KYPROLIS® has been proven to help patients with multiple myeloma live longer without their disease getting worse and reach a complete response\* or better.



KYPROLIS® + Darzalex®  
+ dexamethasone

KYPROLIS® + Revlimid®  
+ dexamethasone

KYPROLIS® in a 70 mg/m<sup>2</sup>  
dose taken once a week  
+ dexamethasone

KYPROLIS® in a 56 mg/m<sup>2</sup>  
dose taken twice a week  
+ dexamethasone

\*Complete response is defined as no detectable M-proteins in the blood and urine, less than 5% abnormal plasma cells in bone marrow, and no detectable plasma cell tumors.

†Darzalex® (daratumumab).

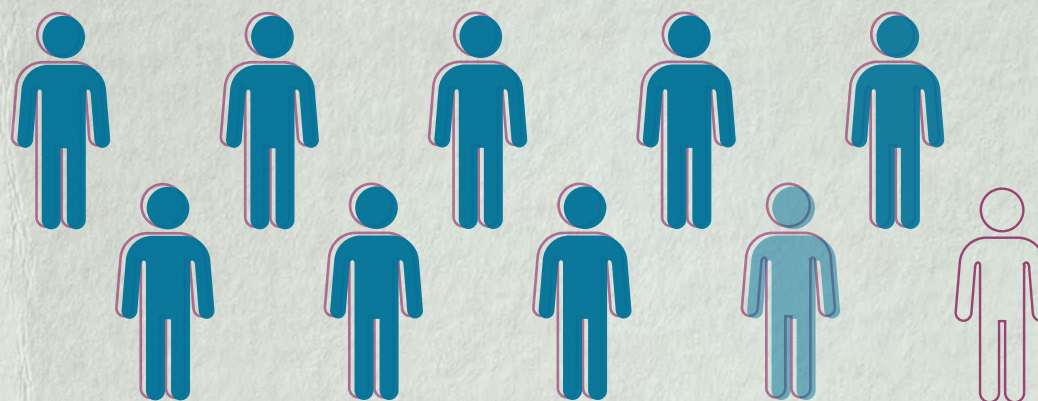
## IMPORTANT SAFETY INFORMATION

- **High blood pressure:** Cases of high blood pressure, including fatal cases, have been reported in patients receiving KYPROLIS. Your blood pressure should be closely monitored during treatment.

Please see additional Important Safety Information on pages 28-30.

Kyprolis®  
(carfilzomib) for injection

## Results for KYPROLIS® (carfilzomib) + Darzalex®\* + dexamethasone



**Over 8 out of 10 patients**

responded to KYPROLIS® + Darzalex® + dexamethasone (84% vs 75% with KYPROLIS® + dexamethasone [Kd] alone)<sup>†</sup>

\*Darzalex® (daratumumab).

<sup>†</sup>Response was defined as a partial response or better.

### IMPORTANT SAFETY INFORMATION

- **Blood clots:** There have been reports of blood clots in patients receiving KYPROLIS. If you are at high risk for blood clots, your doctor can recommend ways to lower the risk.
- If you are using KYPROLIS in combination with dexamethasone or with lenalidomide plus dexamethasone or with daratumumab and dexamethasone, your doctor should assess and may prescribe another medicine to help lower your risk for blood clots.
- If you are using birth control pills or other medical forms of birth control associated with a risk of blood clots, talk to your doctor and consider a different method of birth control during treatment with KYPROLIS in combination with dexamethasone, with lenalidomide plus dexamethasone, or with daratumumab and dexamethasone.

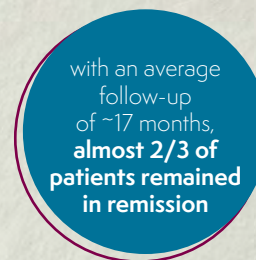
## Results for KYPROLIS® + Darzalex® + dexamethasone

# 2.5X

as many patients on  
KYPROLIS® + Darzalex® + dexamethasone  
achieved a complete response  
than with Kd alone  
(28% vs 10%)

KYPROLIS® + Darzalex® + dexamethasone helped  
more patients live longer without their disease  
getting worse than with Kd alone\*

KYPROLIS® + Darzalex®  
+ dexamethasone



VS

Kd alone



\*In a clinical study of 466 patients with relapsed or refractory multiple myeloma who had received 1 to 3 prior lines of therapy, 312 patients received KYPROLIS® in combination with Darzalex® and dexamethasone, and 154 received KYPROLIS® in combination with dexamethasone. The study compared how long patients lived without their disease getting worse.

Complete response is defined as no detectable M-proteins in the blood and urine, less than 5% abnormal plasma cells in bone marrow, and no detectable plasma cell tumors.

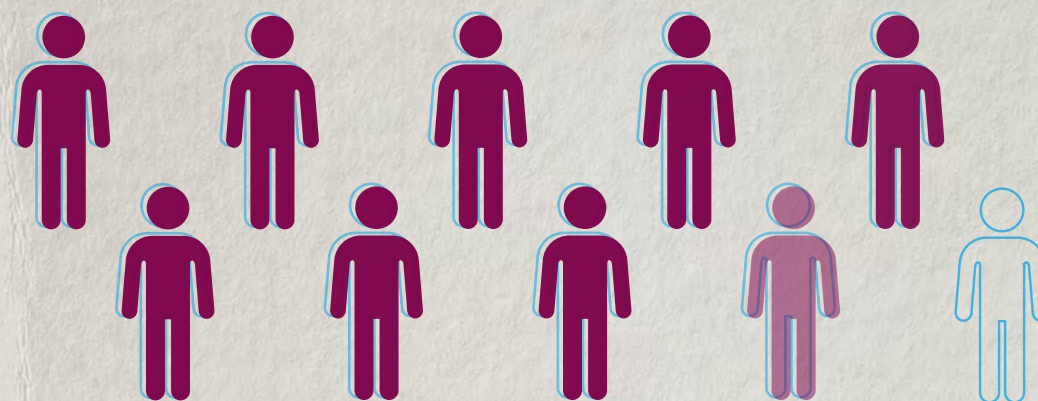
Median is the middle value in a list of values arranged from low to high such that there is the same number of values above and below this middle value.

Darzalex® (daratumumab) is a registered trademark of Janssen Oncology.

Please see additional Important Safety Information on pages 28-30.

Kyprolis®  
(carfilzomib) for  
injection

## Results for **KYPROLIS<sup>®</sup>** (carfilzomib) + Rd (Revlimid<sup>®</sup> + dexamethasone)



**Almost 9 out of 10 patients**  
responded to KYPROLIS<sup>®</sup> + Rd (87% vs 67% with Rd alone)\*

\*Response was defined as a partial response or better.

### **IMPORTANT SAFETY INFORMATION**

- **Infusion-related reactions:** Signs and symptoms of infusion-related reactions included fever, chills, joint pain, muscle pain, facial flushing and/or swelling, swelling of the larynx (voice box), vomiting, weakness, shortness of breath, low blood pressure, fainting, chest tightness, and chest pain. These symptoms can occur immediately following infusion or up to 24 hours after administration of KYPROLIS. If you experience any of these symptoms, contact your doctor immediately.

## Results for **KYPROLIS® + Rd (Revlimid® + dexamethasone)**

# 3X

as many patients on **KYPROLIS® + Rd** achieved a complete response or better than with Rd alone (32% vs 9%)

**KYPROLIS® + Rd** helped patients live longer without their disease getting worse than with Rd alone\*

**KYPROLIS® + Rd**



VS

**Rd alone**



\*In a clinical study of 792 patients with relapsed or refractory multiple myeloma who had received 1 to 3 prior lines of therapy, 396 patients received KYPROLIS® in combination with Revlimid® and dexamethasone, and 396 received Revlimid® in combination with dexamethasone. The study compared how long patients lived without their disease getting worse as well as how long they lived overall.

Complete response is defined as no detectable M-proteins in the blood and urine, less than 5% abnormal plasma cells in bone marrow, and no detectable plasma cell tumors.

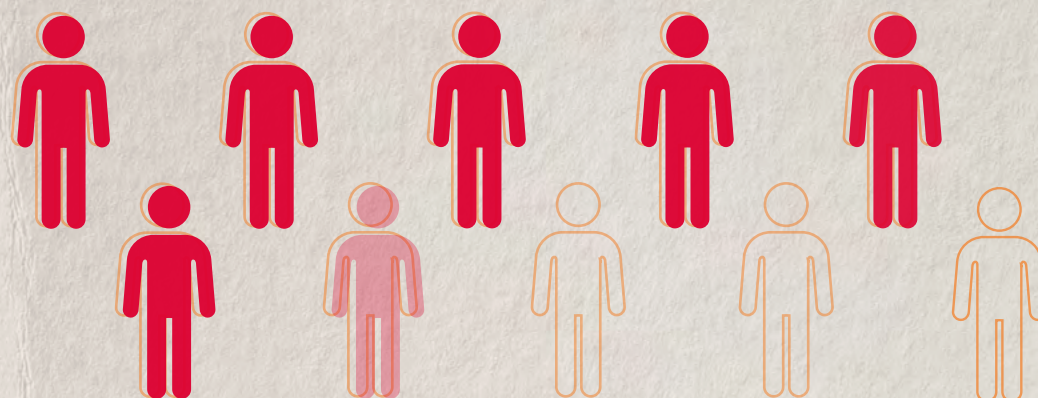
Median is the middle value in a list of values arranged from low to high such that there is the same number of values above and below this middle value.

Revlimid® (lenalidomide) is a registered trademark of Celgene.

Please see additional Important Safety Information on pages 28-30.

**Kyprolis®**  
(carfilzomib) for injection

## Results for once weekly KYPROLIS® (carfilzomib) + d (dexamethasone)



**Over 6 out of 10 patients**

responded to once-weekly KYPROLIS® + d vs 4 out of 10 with twice-weekly KYPROLIS® + d  
(63% vs 41%)\*

\*Response was defined as a partial response or better.

### IMPORTANT SAFETY INFORMATION

- **Severe bleeding problems:** Fatal or serious cases of bleeding problems have been reported in patients receiving KYPROLIS. Your doctor should monitor your signs and symptoms of blood loss.

## Results for once weekly KYPROLIS® + d (dexamethasone)

# 4X

as many patients on  
once-weekly KYPROLIS® + d  
achieved a complete response or better  
(7.1% vs 1.7% with twice-weekly KYPROLIS® + d)

KYPROLIS® + d once weekly helped patients  
live longer without their disease getting worse  
than with KYPROLIS® + d twice weekly\*

KYPROLIS® + d  
once weekly



VS

KYPROLIS® + d  
twice weekly



\*In a clinical study of 478 patients with relapsed and refractory multiple myeloma who had received 2 to 3 prior lines of therapy, 240 patients received KYPROLIS® at 70 mg/m<sup>2</sup> in combination with dexamethasone once weekly, and 238 patients received KYPROLIS® at 27 mg/m<sup>2</sup> in combination with dexamethasone twice weekly. The study compared how long patients lived without their disease getting worse.

Complete response is defined as no detectable M-proteins in the blood and urine, less than 5% abnormal plasma cells in bone marrow, and no detectable plasma cell tumors.

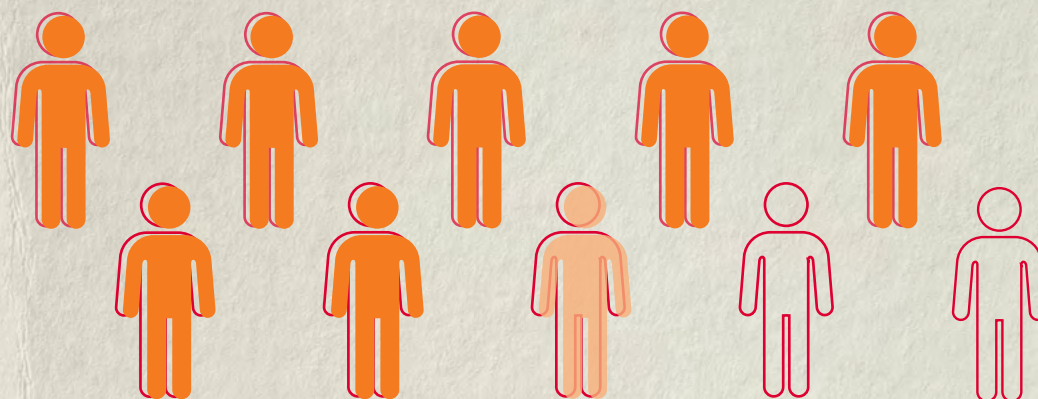
Median is the middle value in a list of values arranged from low to high such that there is the same number of values above and below this middle value.

27 mg/m<sup>2</sup> is not an FDA-approved dose for KYPROLIS® in combination with dexamethasone alone.

Please see additional Important Safety Information on pages 28-30.

Kyprolis®  
(carfilzomib) for injection

## Results for twice-weekly KYPROLIS® (carfilzomib) + d (dexamethasone)



**Almost 8 out of 10 patients**  
responded to twice-weekly KYPROLIS® + d  
(77% vs 63% with Velcade® + d [Vd])\*

\*Response was defined as a partial response or better.

### IMPORTANT SAFETY INFORMATION

- **Very low platelet count:** Low platelet levels can cause unusual bruising and bleeding. You should have regular blood tests to check your platelet count during treatment.



## Results for twice-weekly KYPROLIS® + d (dexamethasone)

# 2X

as many patients on  
**twice-weekly KYPROLIS® + d**  
achieved a complete response or  
better than with Vd  
(13% vs 6%)

KYPROLIS® + d twice weekly helped patients  
live nearly 2x longer without their disease  
getting worse than with Vd alone\*

KYPROLIS® + d  
twice weekly



VS

Vd alone



\*In a clinical study of 929 patients with relapsed or refractory multiple myeloma who had received 1 to 3 prior lines of therapy, 464 patients received KYPROLIS® in combination with dexamethasone, and 465 received Velcade® in combination with dexamethasone. The study compared how long patients lived without their disease getting worse as well as how long they lived overall.

Complete response is defined as no detectable M-proteins in the blood and urine, less than 5% abnormal plasma cells in bone marrow, and no detectable plasma cell tumors.

Median is the middle value in a list of values arranged from low to high such that there is the same number of values above and below this middle value.

Velcade® (bortezomib) is a registered trademark of Millennium Pharmaceuticals, Inc.

Please see additional Important Safety Information on pages 28-30.

**Kyprolis**®  
(carfilzomib) for  
injection

Let's make a

# re remission PLAN

for multiple myeloma relapse

**Step 3** Relapse happens.  
But so does [re]remission



## Starting treatment with KYPROLIS®

Getting used to a new treatment regimen for multiple myeloma takes some time. Learning how and when KYPROLIS® is administered can help you feel more prepared.

“ I always dress comfy when I go to the infusion center; that’s kind of my calming effect. ”

-Michelle (real KYPROLIS® patient)

## How KYPROLIS® is given

### What is it?



**KYPROLIS® is an intravenous (IV) infusion**

This is a way to put fluids, including a medicine, into your bloodstream through a vein.

### How long?



**Infusion time:**

**10 or 30 minutes depending on your treatment regimen**

Plan to spend some extra time at the clinic while your healthcare team prepares for your treatment.

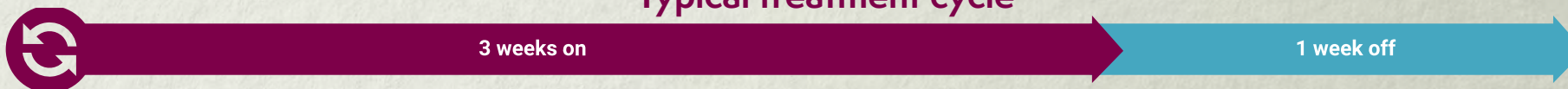
### How often?



**Once weekly or twice weekly, depending on your treatment regimen**

Your doctor will advise which is right for you.

## Typical treatment cycle



## IMPORTANT SAFETY INFORMATION

- **Liver problems:** Cases of liver failure, including fatal cases, have been reported in patients receiving KYPROLIS. Your liver function should be closely monitored during treatment.

Please see additional Important Safety Information on pages 28-30.

**Kyprolis®**  
(carfilzomib) for injection

## Tips for before KYPROLIS® (carfilzomib) infusions

Consider these tips to help you practice good self-care both before and after infusions.

### Before your infusion



**Take it easy**  
and rest



**Drink water**  
as instructed by  
your doctors



**Coordinate your visit**  
with a companion, if  
one is available



**Use a KYPROLIS®  
treatment tracker**



**Dress comfortably**  
and wear loose-fitting,  
layered clothing



**Pack a bag**  
with snacks and something  
to pass the time

Check with your infusion center to see if bringing food is okay.

### IMPORTANT SAFETY INFORMATION

- **Blood problems:** Cases of a blood disease called thrombotic microangiopathy, including thrombotic thrombocytopenic purpura/hemolytic uremic syndrome (TTP/HUS), including fatal cases, have been reported in patients who received KYPROLIS. Your doctor should monitor your signs and symptoms.

## Tips for after KYPROLIS<sup>®</sup> infusions

### After your infusion



**Rest and recover,**  
you might feel tired



**Follow any special instructions**  
given by your healthcare team



**Share your experience**  
by talking to your family, friends,  
and support communities



**Use a journal**  
to keep track of how  
you're feeling

Please see Important Safety Information on pages 28-30.

**Kyprolis<sup>®</sup>**  
(carfilzomib) for  
injection

Let's make a

# re remission PLAN

for multiple myeloma relapse

**Step 4** Talk with your doctors  
and let them know what  
you're feeling emotionally  
and physically



## Safety information about KYPROLIS®

It's normal to worry about how a treatment can make you feel. Becoming familiar with possible side effects can help you feel more prepared.

### When to call your doctor

Call your doctor if you have symptoms of low blood pressure, like dizziness, tiredness, and fainting spells. Do not drive or operate machinery if you experience any of these symptoms.

Also, you should contact your doctor right away if you have any of the following:

- Shortness of breath (trouble breathing)
- Prolonged, unusual, or excessive bleeding
- Yellowing of the skin and/or eyes (jaundice)
- Headaches, confusion, dizziness or loss of balance, trouble talking or walking, weakness on one side of the body, seizures, or loss of sight
- Pregnancy (women should not receive KYPROLIS® if they are pregnant or breastfeeding)
- Any other side effect that bothers you or does not go away

### Possible side effects

Talk to your doctor about possible side effects with KYPROLIS® and tips for managing them. The most common side effects happened in at least 1 out of 5 patients receiving KYPROLIS® in clinical trials.

**Please see additional Important Safety Information on pages 28-30.**

### Most common side effects

(observed in at least 1 in 5 patients)

#### **KYPROLIS® + Darzalex®\*\* + dexamethasone, KYPROLIS® + Revlimid® + dexamethasone, and KYPROLIS® + dexamethasone**

- Low red blood cell count
- Diarrhea
- High blood pressure (hypertension)
- Tiredness (fatigue)
- Upper airway (respiratory tract) infection
- Low platelets
- Fever
- Cough
- Difficulty breathing
- Sleeplessness (insomnia)

\*Darzalex® (daratumumab).

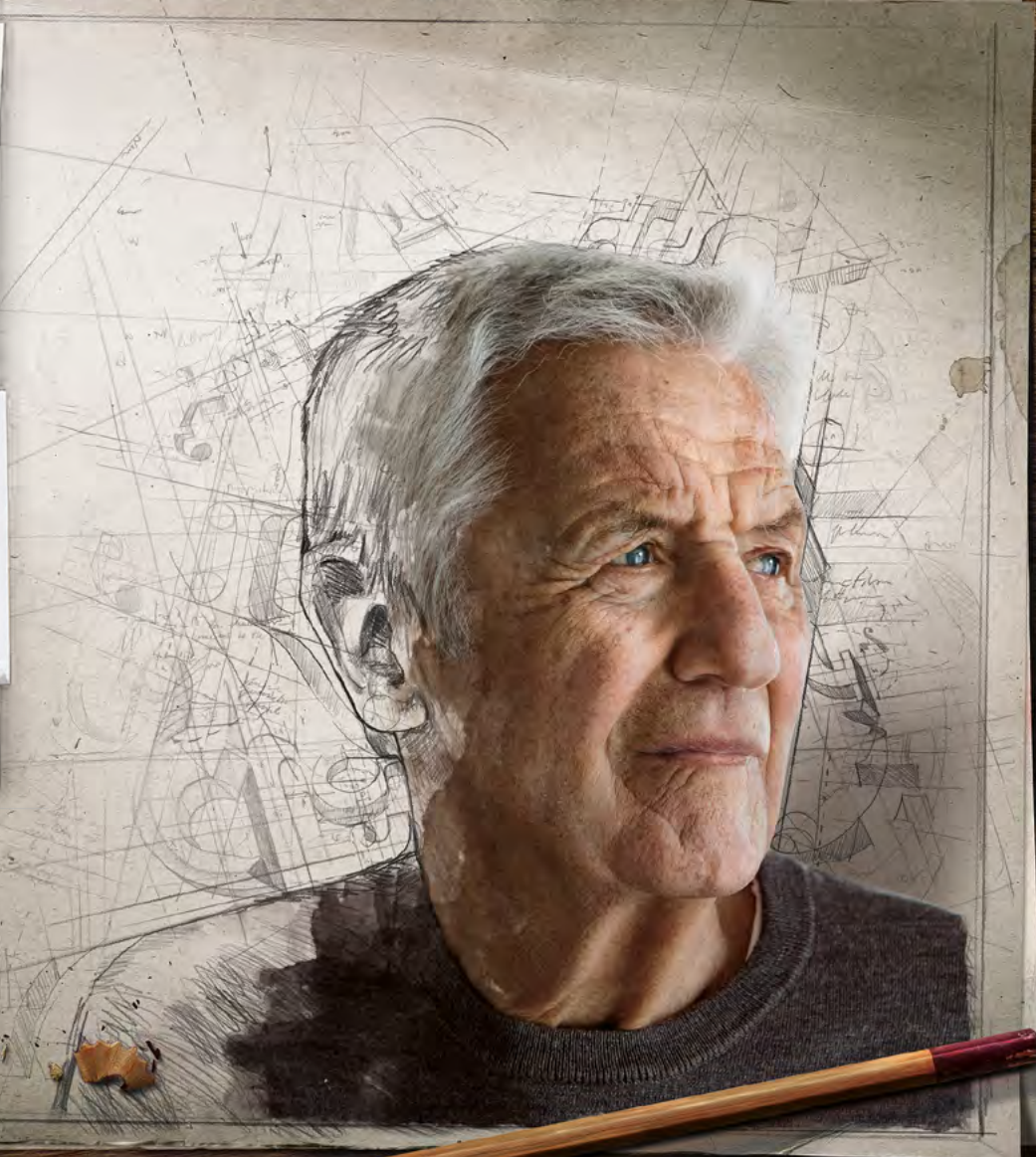
**Kyprolis®**  
(carfilzomib) for injection

Let's make a

# re remission PLAN

for multiple myeloma relapse

Step 5 Believe in yourself





## KYPROLIS® Patient Support program

It can be challenging to start a new treatment regimen after multiple myeloma relapses. The KYPROLIS® Patient Support program can help you feel more in control and confident about taking the next step.

The Patient Support program is designed to provide you with important information about KYPROLIS®, including educational materials that can help you follow your treatment plan. The program provides tools and services for patients, caregivers, and other members of your support circle.

You can sign up online at [www.kyprolis.com/support](http://www.kyprolis.com/support)

“ I have a great support system that I feel so blessed to have. I love my nurse at my center, who I can call and know that she'll get back to me as soon as possible. My husband and my mom are my rocks. ”

-Michelle (real KYPROLIS® patient)



As you take control of your multiple myeloma,  
KYPROLIS® is here to help you every step of the way

Kyprolis®  
(carfilzomib) for  
injection

# AMGEN Nurse Ambassadors\*

Sometimes you need someone who knows what you're going through. That's why Amgen offers the Amgen Assist 360™ Nurse Ambassadors program. Your Amgen Nurse Ambassador will be your single point of contact so you can get the kind of support you need, when you need it.

## An AMGEN Nurse Ambassador can help you with:

### Finding the resources† most important to you



Amgen Nurse Ambassadors\* can refer you to independent nonprofit organizations that may provide community resources, one-on-one counseling services, and local support groups.

### Understanding your coverage



Learn how KYPROLIS® may be covered and find programs that may make treatment more affordable, such as Amgen FIRST STEP™.

### Answering your medical questions



Work with our Amgen Nurse Ambassadors\* to answer questions concerning your Amgen medication.

**To connect with an Amgen Nurse Ambassador, call 1-888-4ASSIST (1-888-427-7478), Monday through Friday, 9 AM to 8 PM Eastern Time.**

\*Amgen Nurse Ambassadors are there to support, not replace, your treatment plan and do not provide medical advice or case management services. Patients should always consult their healthcare provider regarding medical decisions or treatment concerns.

†Resources include referrals to independent nonprofit patient assistance programs. Eligibility for resources provided by independent nonprofit patient assistance programs is based on the nonprofits' criteria. Amgen has no control over these programs and provides referrals as a courtesy only.

## Financial assistance for KYPROLIS®

Knowing your options is a powerful thing. Amgen is committed to ensuring patients have access to KYPROLIS®.

### If you are eligible\* and commercially insured



The **Amgen FIRST STEP™** program can help you cover your out-of-pocket prescription costs, including deductible co-insurance, and co-payment.

- \$0 out-of-pocket for first dose or cycle
- \$5 out-of-pocket for subsequent doses or cycles, up to the brand program benefit maximum
- No income eligibility requirement

### If you are on government insurance (like Medicare)



Amgen Nurse Ambassadors<sup>†</sup> can refer you to **independent nonprofit patient assistance programs** that may be able to help you afford KYPROLIS® co-pay costs.<sup>‡</sup>

### If you are uninsured



The **Amgen Safety Net Foundation** is a nonprofit patient assistance program sponsored by Amgen that helps qualifying patients access Amgen medicines at no cost.

\*Subject to program eligibility requirements and coverage limits. See [AmgenFIRSTSTEP.com](http://AmgenFIRSTSTEP.com) for details. This program is not open to patients receiving prescription reimbursement under any federal, state, or government-funded healthcare program, such as Medicare, Medicare Advantage, Medicare Part D, Medicaid, Medigap, Veterans Affairs (VA), the Department of Defense (DoD) or TRICARE®, or where otherwise prohibited by law.

<sup>†</sup>Amgen Nurse Ambassadors are there to support, not replace, your treatment plan and do not provide medical advice or case management services. Patients should always consult their healthcare provider regarding medical decisions or treatment concerns.

<sup>‡</sup>Resources include referrals to independent nonprofit assistance programs. Eligibility for resources provided by independent nonprofit patient assistance programs is based on the nonprofits' criteria. Amgen has no control over these programs and provides referrals as a courtesy only.

**Kyprolis®**  
(carfilzomib) for Injection

## Other helpful resources

Interested in hearing from real patients on KYPROLIS®? Find out more below.

Experience the stories of real patients who have taken KYPROLIS®

Visit [www.kyprolis.com/stories](http://www.kyprolis.com/stories)

## IMPORTANT SAFETY INFORMATION

**KYPROLIS® (carfilzomib) can cause serious side effects:**

- **Heart problems:** KYPROLIS can cause heart problems or worsen pre-existing heart conditions. Death due to cardiac arrest has occurred within one day of KYPROLIS administration. Before starting KYPROLIS, you should have a full medical work-up (including blood pressure and fluid management). You should be closely monitored during treatment.
- **Kidney problems:** There have been reports of sudden kidney failure in patients receiving KYPROLIS. Your kidney function should be closely monitored during treatment.
- **Tumor lysis syndrome (TLS):** Cases of TLS have been reported in patients receiving KYPROLIS, including fatalities. You should be closely monitored during treatment for any signs of TLS.
- **Lung damage:** Cases of lung damage have been reported in patients receiving KYPROLIS, including fatal cases.
- **Pulmonary hypertension (high blood pressure in the lungs):** There have been reports of pulmonary hypertension in patients receiving KYPROLIS.
- **Lung complications:** Shortness of breath was reported in patients receiving KYPROLIS. Your lung function should be closely monitored during treatment.
- **High blood pressure:** Cases of high blood pressure, including fatal cases, have been reported in patients receiving KYPROLIS. Your blood pressure should be closely monitored during treatment.
- **Blood clots:** There have been reports of blood clots in patients receiving KYPROLIS. If you are at high risk for blood clots, your doctor can recommend ways to lower the risk.

- **Blood clots (cont'd):** If you are using KYPROLIS in combination with dexamethasone or with lenalidomide plus dexamethasone or with daratumumab and dexamethasone, your doctor should assess and may prescribe another medicine to help lower your risk for blood clots.
- If you are using birth control pills or other medical forms of birth control associated with a risk of blood clots, talk to your doctor and consider a different method of birth control during treatment with KYPROLIS in combination with dexamethasone, with lenalidomide plus dexamethasone, or with daratumumab and dexamethasone.
- **Infusion-related reactions:** Signs and symptoms of infusion-related reactions included fever, chills, joint pain, muscle pain, facial flushing and/or swelling, swelling of the larynx (voice box), vomiting, weakness, shortness of breath, low blood pressure, fainting, chest tightness, and chest pain. These symptoms can occur immediately following infusion or up to 24 hours after administration of KYPROLIS. If you experience any of these symptoms, contact your doctor immediately.
- **Severe bleeding problems:** Fatal or serious cases of bleeding problems have been reported in patients receiving KYPROLIS. Your doctor should monitor your signs and symptoms of blood loss.
- **Very low platelet count:** Low platelet levels can cause unusual bruising and bleeding. You should have regular blood tests to check your platelet count during treatment.
- **Liver problems:** Cases of liver failure, including fatal cases, have been reported in patients receiving KYPROLIS. Your liver function should be closely monitored during treatment.
- **Blood problems:** Cases of a blood disease called thrombotic microangiopathy, including thrombotic thrombocytopenic purpura/hemolytic uremic syndrome (TTP/HUS), including fatal cases, have been reported in patients who received KYPROLIS. Your doctor should monitor your signs and symptoms.
- **Brain problems:** A nerve disease called Posterior Reversible Encephalopathy Syndrome (PRES), formerly called Reversible Posterior Leukoencephalopathy Syndrome (RPLS), has been reported in patients receiving KYPROLIS. It can cause seizure, headache, lack of energy, confusion, blindness, altered consciousness, and other visual and nerve disturbances, along with high blood pressure. Your doctor should monitor your signs and symptoms.
- Cases of a brain infection called Progressive Multifocal Leukoencephalopathy (PML), including fatal cases, have been reported in patients receiving KYPROLIS. Your doctor should monitor your signs and symptoms.
- **KYPROLIS should not be combined with melphalan and prednisone:** Newly diagnosed transplant ineligible multiple myeloma patients have shown an increased risk of serious and fatal side effects when using KYPROLIS in combination with melphalan and prednisone.

Kyprolis®  
(carfilzomib) for Injection

## IMPORTANT SAFETY INFORMATION (cont'd)

- **Possible fetal harm:** KYPROLIS can cause harm to a fetus (unborn baby) when given to a pregnant woman. Women should use effective contraception during treatment with KYPROLIS and for 6 months following the final dose. Men should use effective contraception during treatment with KYPROLIS and for 3 months following the final dose. KYPROLIS can cause harm to a fetus if used during pregnancy or if you or your partner become pregnant during treatment with KYPROLIS.

### **You should contact your doctor immediately if you experience any of the following:**

- Shortness of breath
- Prolonged, unusual or excessive bleeding
- Yellowing of the skin and/or eyes (jaundice)
- Headaches, confusion, seizures, or loss of sight
- Pregnancy (women should not receive KYPROLIS if they are pregnant or breastfeeding)
- Any other side effect that bothers you or does not go away

### **What are the possible side effects of KYPROLIS?**

- The most common side effects occurring in at least 20% of patients receiving KYPROLIS in the combination therapy trials are: low red blood cell count, diarrhea, high blood pressure (hypertension), tiredness (fatigue), upper airway (respiratory tract) infection, low platelets, fever, cough, difficulty breathing and sleeplessness (insomnia).

These are not all the possible side effects of KYPROLIS. For more information, ask your doctor or pharmacist. Call your doctor for medical advice about side effects.

You are encouraged to report negative side effects of prescription drugs to the FDA. Visit [www.fda.gov/medwatch](http://www.fda.gov/medwatch) or call 1-800-FDA-1088.

**Please see full Product Information.**

Let's make a  
**re** remission  
PLAN  
for multiple myeloma relapse



Consider enrolling in our Patient Support program  
online at [www.kyprolis.com/support](http://www.kyprolis.com/support)

“ One thing that I would always tell somebody new at  
this is that they will do better if they have an optimistic  
view of where they are and where they're going. ”

-Karl (real KYPROLIS® patient)

Kyprolis®  
(carfilzomib) for  
injection

Let's make a

# re remission PLAN

for multiple myeloma relapse

Step 1 Take a breath

Step 2 Understand that this is treatable

Step 3 Relapse happens. But so does [re]remission

Step 4 Talk with your doctors and let them know what you're feeling emotionally and physically

Step 5 Believe in yourself

Remember, [re]remission is possible.\*  
And KYPROLIS® is here to help.

\*Achieving [re]remission happens when you get back to remission, when your disease doesn't get worse and you have a complete or partial disappearance of signs or symptoms, after relapse.

## IMPORTANT SAFETY INFORMATION

### What are the possible side effects of KYPROLIS?

- The most common side effects occurring in at least 20% of patients receiving KYPROLIS in the combination therapy trials are: low red blood cell count, diarrhea, high blood pressure (hypertension), tiredness (fatigue), upper airway (respiratory tract) infection, low platelets, fever, cough, difficulty breathing and sleeplessness (insomnia).

Please see additional Important Safety Information on pages 28-30.

**AMGEN**®

Revlimid is a registered trademark of Celgene Corporation.

All trademarks are the property of their respective owners.

© 2022 Amgen Inc. All rights reserved. Not for reproduction. USA-171-81833 08/22

Kyprolis®  
(carfilzomib) for Injection